



REWINDER

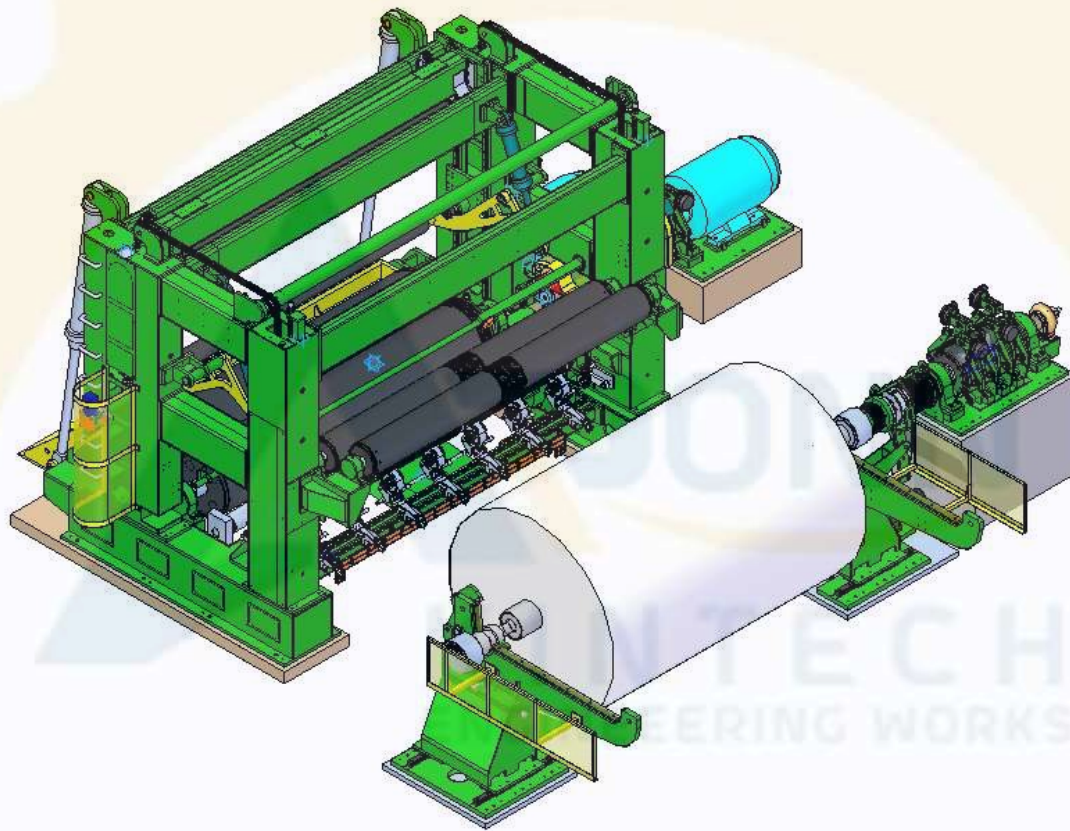


WINDER MACHINE

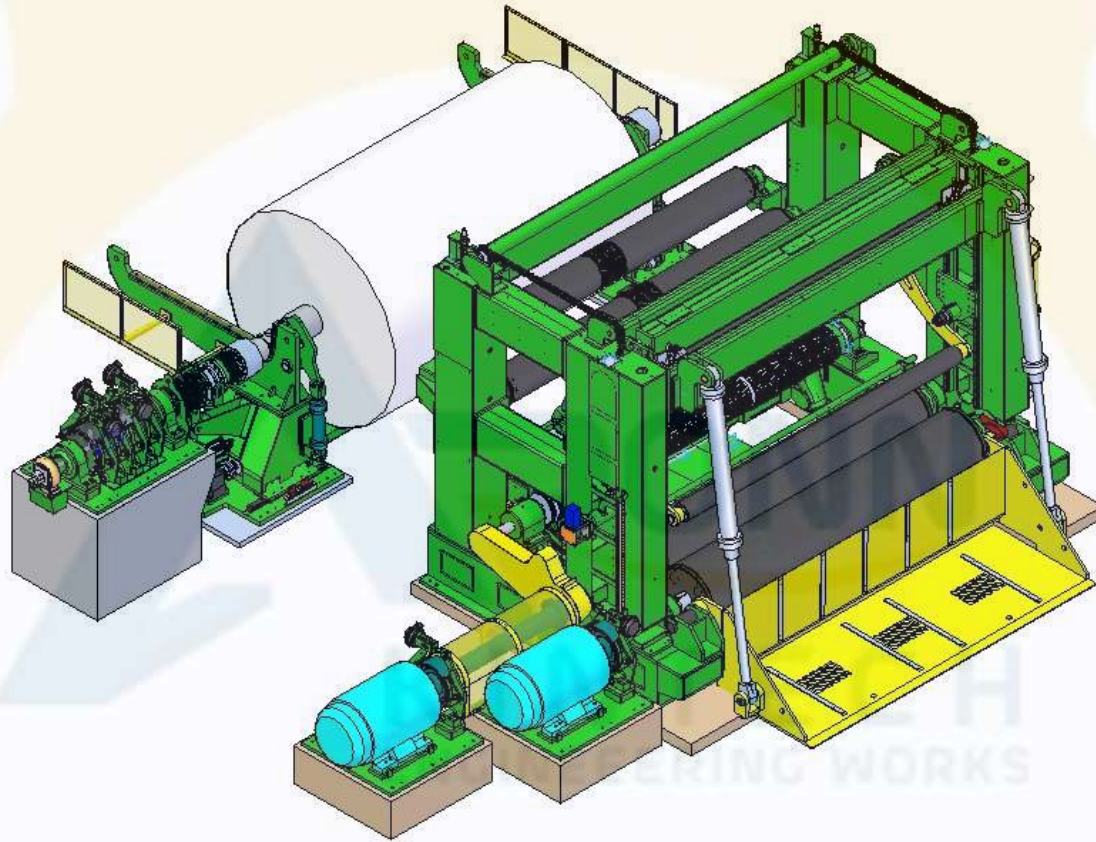
SECTIONS

- ❖ *UNWINDER*
- ❖ *SLITTING STATION*
- ❖ *REWIND SECTION*
- ❖ *REWIDER SPARES*
- ❖ *CONTROL SYSTEM*
- ❖ *HYDRAULIC SYSTEM*
- ❖ *FINISHING HOUSE COMPONENTS*

UNWINDER

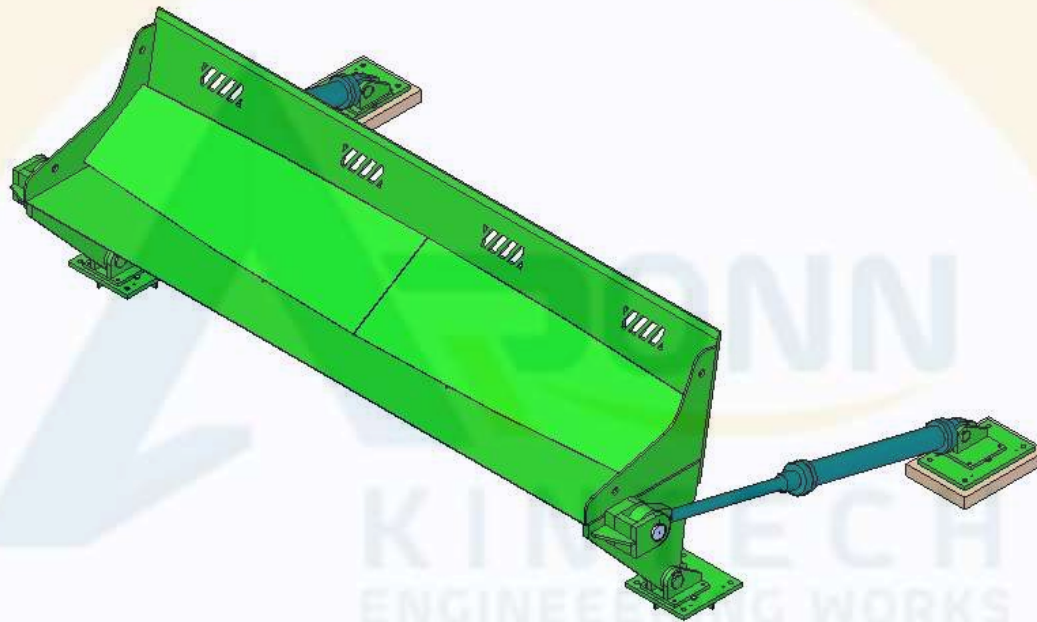


REWINDER

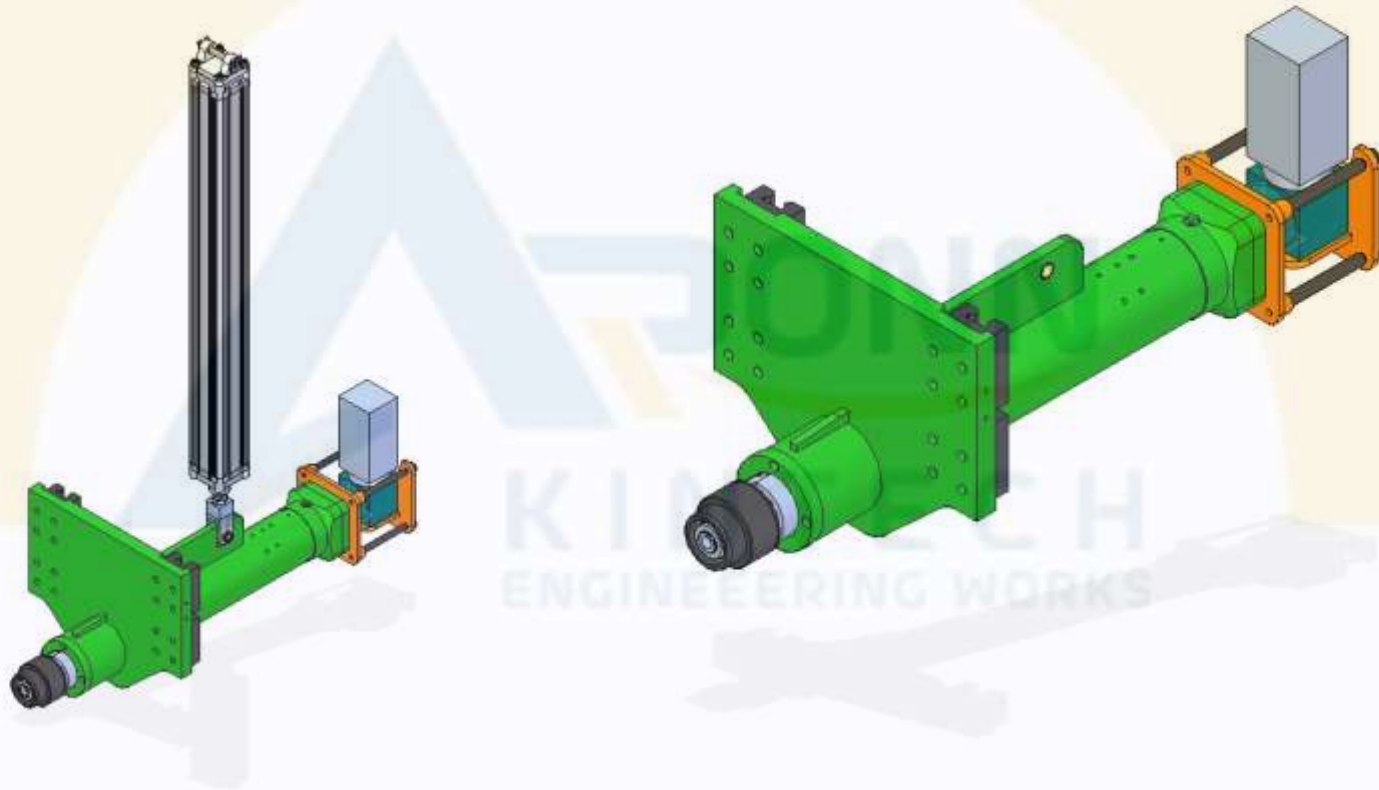


ENGINEERING WORKS

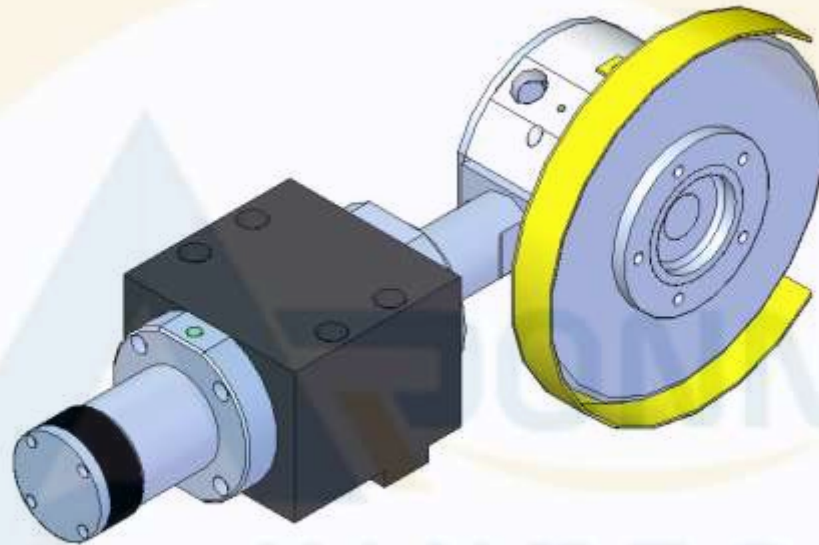
REEL UNLOADER



SHAFLESS CORE HOLDER

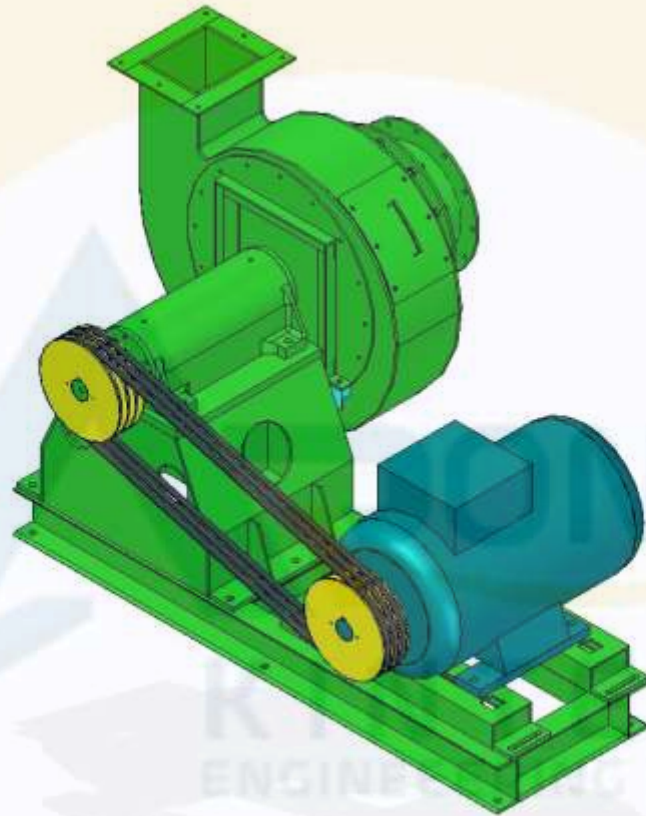


SLITTER KNIFES



KINTECH
ENGINEERING WORKS

TRIM BLOWER



REWINDER CONTROL SYSTEM

- Electrical Control desk for Machine Controls
- Rider roll, Ejector and Cradle operations shall be done through the CD
- Rider Roll Winding NIP Pressure control
- Core Chuck Winding Pressure Control
- Unwind Tension Control
- **TNT Control Rewinder**



REWINDER CONTROL PANELS

- On Machine panel for easy paper feeding and drive start / stop control
- Electrical Junction Box for internal wirings



HYDRAULIC SYSTEM



FINISHING HOUSE COMPONENTS

- Drum rolls with Tungsten Carbide / Molybdenum
- All types of Segmented Aluminium Rolls, Split Rider Rolls
- Ceramic Coated Rolls, Rubber Rolls
- Bow / Spreader Rolls
- Reel Stopper
- Core Cutting Machine

DRUM ROLL –TC COATING



MULTI SEGMENTED ALUMINIUM ROLL – TC COATING



ENGINEERING WORKS

ALUMINIUM TABLE ROLL – TC COATED



SPLIT RIDER ROLL



REEL STOPPER



CORE CUTTING MACHINE



ACCESSORIES

SLITTER ROLL AIR HOSE



SLITTER MOTOR



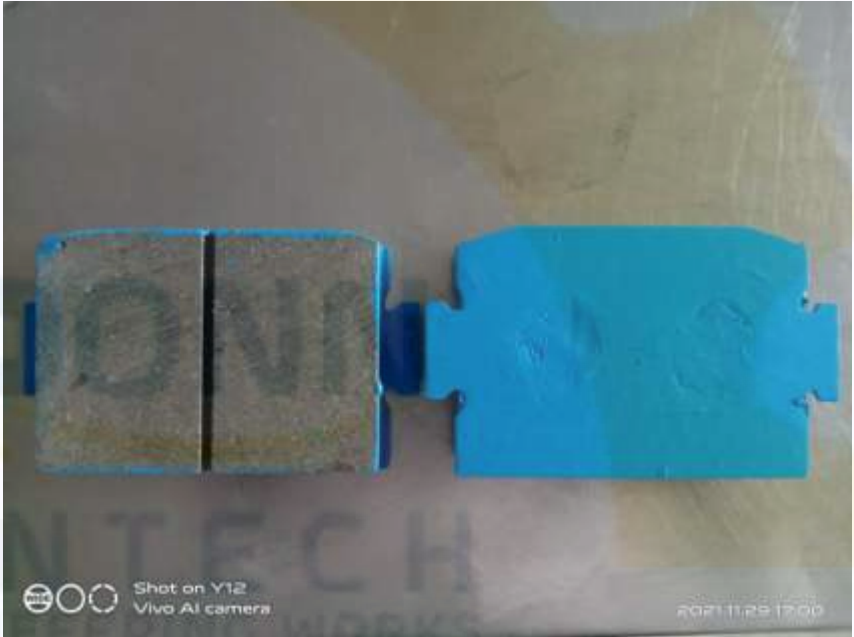
OTHER COMPONENTS

- *Dust Collection System near Slitters*
- *Hydraulic Reel Splitter for Rejected Reel*
- *Roll Kicker for Reel Transfer*
- *Overhauling of Imported Bow Rolls*
- *All kind of Hydraulic / Pneumatic Brake pads*

SHEETER BRAKE PAD



UNWIND BRAKE PAD



RW - WRITING & PRINTING



PNEUMATIC RW - KRAFT



HYDRAULIC RW - KRAFT



RW with BG – MG POSTER



RW with Horizontal Slitting



RW with BG – Special Grade



RW – 1500 REEL DIA



*Assuring the best Product by Knowing the Industrial Needs with **TECH**nology*

By :

**ARONN KINTECH
ENGINEERING WORKS,**

7/2, Annaiappan Street,
Nallampalayam,
Coimbatore.

E-Mail: aronnkintech@gmail.com

Mobile : +91 9894459351 / 9500510556

